

Please address all correspondence  
To Government Statistician  
In reply, please quote the file reference



File Ref: Issue 19

GOVERNMENT OF SAMOA

## SAMOA BUREAU OF STATISTICS

# IMPORT PRICE INDEX – MARCH 2015 QUARTER (Base Period: March 2009 quarter = 100.0)

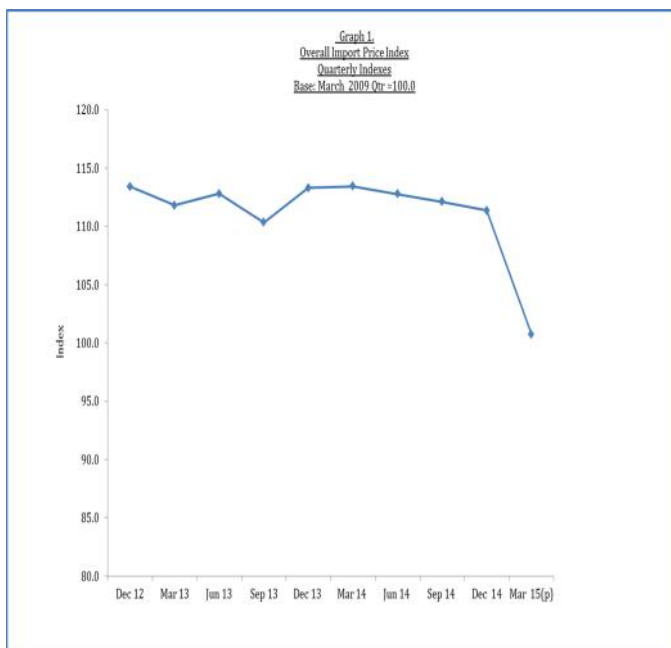
### Highlights of the quarter

- Import price index fell 9.5 percent in the March 2015 quarter.
- Mineral Products price recorded the largest decrease (down 27.2 percent).

### Overview

The import price index for the March 2015 quarter decreased 9.5 percent when compared to the December 2014 quarter. In comparison with the March 2014 quarter, the current import price fell 11.2 percent.

The four quarters ending March 2015 showed a decrease of 2.9 percent in the overall import price compared to the four quarters ending March 2014. See table 1 and graph 1.

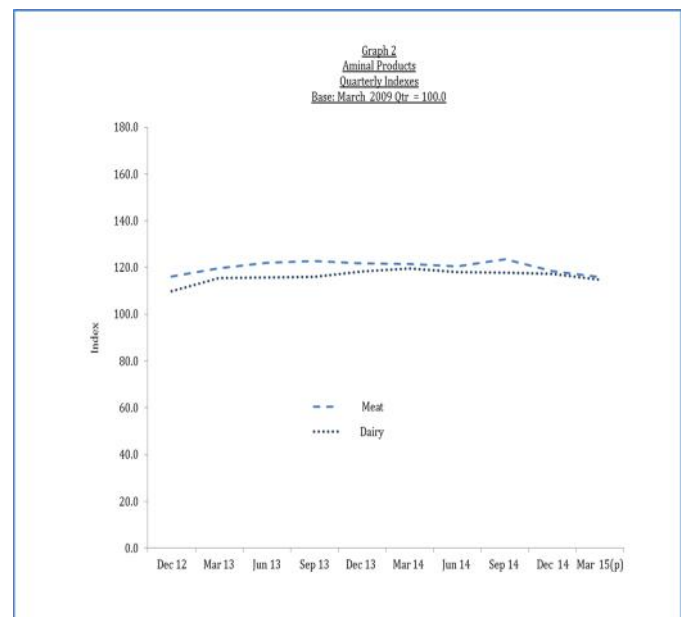


Source: Samoa Bureau of Statistics

### HS Section 1: Live Animals; Animal Products price fall 2.2%.

Live animals and animal products price fell 2.2 percent in the March 2015 quarter, following a fall of 3.1 percent in the December 2014 quarter. The latest fall was influenced by lower prices of dairy products (down 2.2 percent) and meat products (down 2.1 percent), reflecting lower prices of eggs (down 3.2 percent), liquid milk (down 2.2 percent), butter (down 2.1 percent), powder milk (down 1.3 percent), sheep meats (down 3.8 percent) and poultry meat (down 0.3 percent). When compared to the December 2014 quarter, the current price of live animals and animal products decreased 4.5 percent.

In the four quarters ending March 2015, the overall price of live animals and animal products decreased 1.5 percent when compared to the four quarters ending March 2014. See tables 1 & 2 and graph 2.



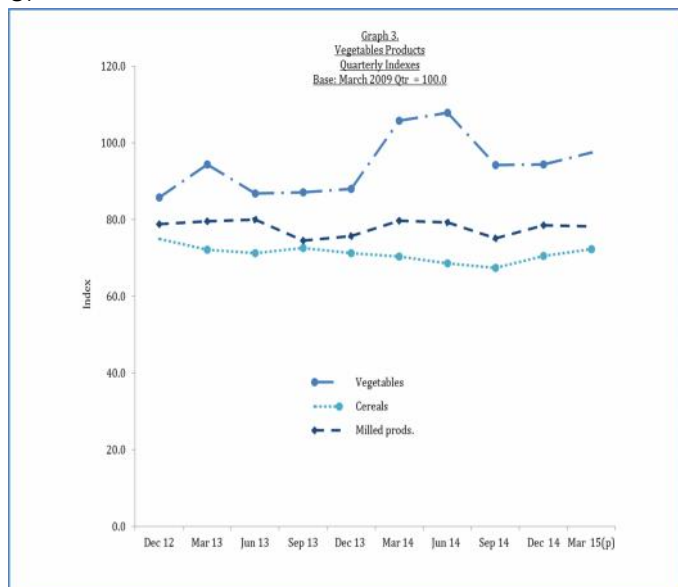
Source: Samoa Bureau of Statistics

## **HS Section 2: Vegetable Products price rise**

### **1.2%.**

Vegetable Products price rose 1.2 percent in the March 2015 quarter, following a rise of 3.5 percent in the December 2014 quarter. The rise over the previous quarter was mainly due to higher prices of vegetables (up 3.3 percent) and cereals (up 2.5 percent); reflecting higher prices of onions (up 5.3 percent), potatoes (up 1.9 percent) and rice (up 2.5 percent). When compared to the March 2014 quarter, the current price of vegetable products decreased 2.0 percent.

Reviewing the four quarters ending March 2015 over the four quarters ending March 2014, the current overall price of vegetable products increased 0.9 percent. See tables 1 & 2 and graph 3.

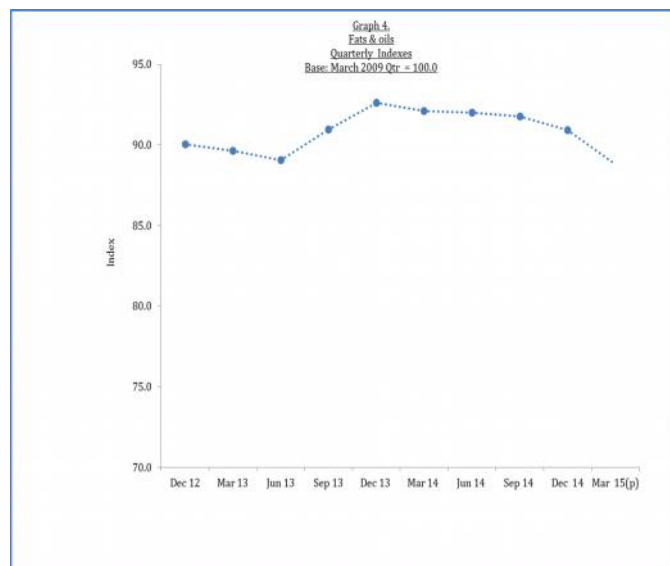


Source: Samoa Bureau of Statistics

## **HS Section 3: Animal or Vegetable fats & oils price fall 2.3%.**

Animal or Vegetable fats and oils price fell 2.3 percent in the March 2015 quarter when compared to the December 2014 quarter. The fall was due to lower prices of vegetable oils (down 4.1 percent), and margarine (down 2.7 percent). When compared to the March 2014 quarter, the current price of animal or vegetable fats and oils decreased 3.6 percent.

The four quarters ending March 2015 quarter showed a decrease of 0.3 per cent in the overall price of vegetable fats and oils compared to the four quarters ending March 2014. See tables 1 & 2 and graph 4

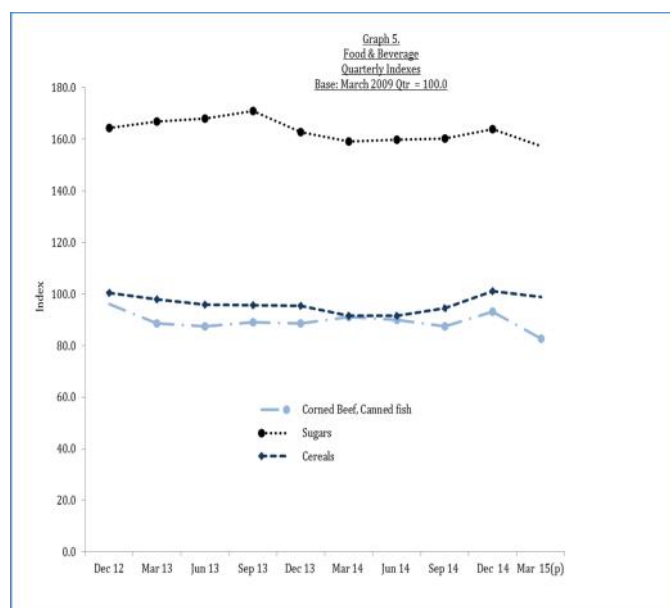


Source: Samoa Bureau of Statistics

## **HS Section 4: Food and Beverages price fall 6.0%.**

Food and Beverages price fell 6.0 percent in the March 2015 quarter when compared to the December 2014 quarter. This was mainly due to lower price of corn beef and canned fish (down 11.1 percent), reflecting lower price of canned fish (down 17.1 percent). Decreases were also noted in prices of sugar (down 3.9 percent) and cereals (down 2.4 percent). In comparison with the March 2014 quarter, the current price of food and beverages decreased 1.6 per cent.

In comparing the four quarters ending March 2015 over the four quarters ending March 2014, the overall price of food and beverages decreased 0.8 percent. See tables 1 & 2 and graph 5.

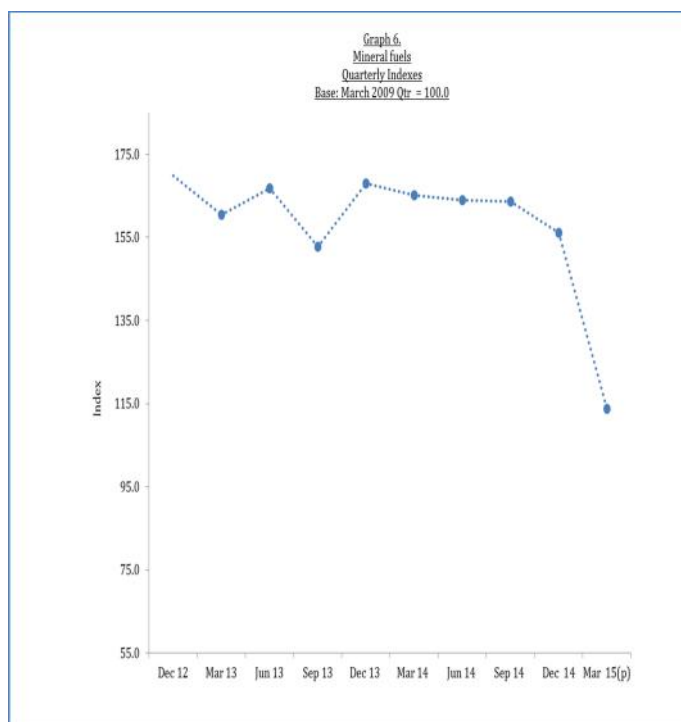


Source: Samoa Bureau of Statistics

## **HS Section 5: Mineral Products price fell 27.2%.**

The most significant downward contribution to import prices came from mineral products price, which fell 27.2 percent in the March 2015 quarter, driven by lower price of petroleum oils. In comparison with the March 2014 quarter, the current price of mineral products decreased 31.1 percent.

The overall price of mineral products in the four quarters ending March 2015 was 8.4 percent lower than the four quarters ending March 2014. See tables 1 & 2 and graph 6.



Source: Samoa Bureau of Statistics

## **Technical notes**

The Import Price Index (MPI) measures changes in the cost, insurance, and freight (CIF) prices of imports of merchandise into Samoa. It is a fixed weight index with March 2009 quarter = 100.0 and is calculated on a quarterly basis using the International Harmonized System of Trade Classification (HS). The items included in the index were selected on the basis of their importance to the total import.

The scope of the MPI relates to the following sections of the International Harmonized System of Trade Classification (HS): 1. Live Animals: Animal Products, 2. Vegetable Products, 3. Animal or Vegetable fats and oils, 4. Food and Beverages and 5. Mineral Products. The index represents 50 percent of total Imports.

If you would like more information about the Import Price Index for Quarter 1 2015, please contact the Economics Division of the Samoa Bureau of Statistics at:



**SAMOA BUREAU OF STATISTICS**

*Economic Statistics Division  
FMFM II Building, Level 1  
P O Box 1151  
Apia, Samoa*

*Phone: (685) 62014/62022  
Fax: (685) 24675  
E-mail: [infostats@sbs.gov.ws](mailto:infostats@sbs.gov.ws)*

The MPI for June 2015 quarter will be ready on 31<sup>th</sup> July 2015.



Muagututi'a Sefuiva Reupena.  
**Government Statistician**

# IMPORT PRICE INDEX

Base: March 2009 Quarter = 100.0

Table 1

CODE	DESCRIPTION	Weight	Dec 12	2013				2014				2015	% Change	
				Mar 13	Jun 13	Sep 13	Dec 13	Mar 14	Jun 14	Sep 14	Dec 14	Mar 15(p)	Mar-15 / Dec-14	Mar-15 / Mar-14
<b>I</b>	<b>ANIMAL PRODUCTS</b>	<b>100</b>	<b>114.3</b>	<b>118.6</b>	<b>120.2</b>	<b>120.8</b>	<b>120.9</b>	<b>121.0</b>	<b>119.8</b>	<b>121.9</b>	<b>118.1</b>	<b>115.6</b>	<b>-2.2</b>	<b>-4.5</b>
2	Meat	71.2	116.1	119.9	121.9	122.8	121.9	121.5	120.5	123.5	118.5	116.0	-2.1	-4.6
4	Dairy	28.8	109.8	115.6	115.8	116.0	118.4	119.7	118.1	117.8	117.3	114.7	-2.2	-4.2
<b>II.</b>	<b>VEGETABLE PRODUCTS</b>	<b>100</b>	<b>78.9</b>	<b>79.8</b>	<b>78.5</b>	<b>76.1</b>	<b>76.4</b>	<b>81.2</b>	<b>80.8</b>	<b>76.0</b>	<b>78.7</b>	<b>79.6</b>	<b>1.2</b>	<b>-2.0</b>
7	Vegetables	17.0	85.9	94.4	86.8	87.1	88.0	105.7	107.9	94.2	94.3	97.4	3.3	-7.9
10	Cereals	31.7	75.0	72.1	71.2	72.6	71.2	70.4	68.6	67.6	70.6	72.3	2.5	2.7
11	Milled prods.	51.3	78.9	79.7	80.2	74.6	75.7	79.8	79.3	75.2	78.6	78.3	-0.4	-1.9
<b>III.</b>	<b>FATS &amp; OILS</b>	<b>100</b>	<b>90.1</b>	<b>89.6</b>	<b>89.1</b>	<b>91.0</b>	<b>92.7</b>	<b>92.1</b>	<b>92.0</b>	<b>91.8</b>	<b>90.9</b>	<b>88.8</b>	<b>-2.3</b>	<b>-3.6</b>
15	Fats & oils	100.0	90.1	89.6	89.1	91.0	92.7	92.1	92.0	91.8	90.9	88.8	-2.3	-3.6
<b>IV.</b>	<b>FOOD &amp; BEVERAGE</b>	<b>100</b>	<b>113.9</b>	<b>110.4</b>	<b>109.6</b>	<b>110.9</b>	<b>108.7</b>	<b>107.7</b>	<b>107.3</b>	<b>107.2</b>	<b>112.8</b>	<b>106.0</b>	<b>-6.0</b>	<b>-1.6</b>
16	Corned Beef, Canned fish	43.6	96.3	88.6	87.5	89.2	88.7	91.1	90.0	87.5	93.2	82.9	-11.1	-9.0
17	Sugars	24.0	164.4	166.8	168.0	171.0	162.8	159.1	159.8	160.2	163.9	157.4	-3.9	-1.0
19	Cereals	32.4	100.4	98.0	96.0	95.6	95.5	92.0	91.7	94.6	101.3	98.9	-2.4	7.5
<b>V.</b>	<b>MINERAL PRODUCTS</b>	<b>100</b>	<b>170.0</b>	<b>160.5</b>	<b>166.8</b>	<b>152.9</b>	<b>168.0</b>	<b>165.1</b>	<b>163.9</b>	<b>163.7</b>	<b>156.2</b>	<b>113.8</b>	<b>-27.2</b>	<b>-31.1</b>
27	Mineral fuels	100	170.0	160.5	166.8	152.9	168.0	165.1	163.9	163.7	156.2	113.8	-27.2	-31.1
<b>Total, All groups</b>		<b>500</b>	<b>113.4</b>	<b>111.8</b>	<b>112.8</b>	<b>110.3</b>	<b>113.3</b>	<b>113.4</b>	<b>112.8</b>	<b>112.1</b>	<b>111.4</b>	<b>100.8</b>	<b>-9.5</b>	<b>-11.2</b>

Source: Samoa Bureau Statistics (Economics Division)

(P) Provisional figures

(R) Revise figures

**IMPORT PRICE INDEX**  
Base: March 2009 Quarter = 100.0

**Table 2**

	Weight	2013					2014				2015	%Change
		Dec 2012	Mar 2013	Jun 2013	Sep 2013	Dec 2013	Mar 2014	Jun 2014	Sep 2014	Dec 2014	Mar 2015(P)	Mar 15/Dec 14
<b>I. ANIMAL PRODUCTS</b>												
<b>02 Meat</b>	<b>100.0</b>	<b>116.1</b>	<b>119.9</b>	<b>121.9</b>	<b>122.8</b>	<b>121.9</b>	<b>121.5</b>	<b>120.5</b>	<b>123.5</b>	<b>118.5</b>	<b>116.0</b>	<b>-2.1</b>
0204 Sheep	33.7	166.9	168.0	175.5	184.4	183.3	186.0	192.8	190.6	183.6	176.6	-3.8
0207 Poultry	66.3	90.3	95.4	94.7	91.4	90.7	88.7	83.8	89.5	85.4	85.1	-0.3
<b>04 Dairy</b>	<b>100.0</b>	<b>109.8</b>	<b>115.6</b>	<b>115.8</b>	<b>116.0</b>	<b>118.4</b>	<b>119.7</b>	<b>118.1</b>	<b>117.8</b>	<b>117.3</b>	<b>114.7</b>	<b>-2.2</b>
0401 Milk	42.0	114.9	120.6	118.3	118.0	120.6	116.4	115.0	117.8	116.3	113.8	-2.2
0402 Milk, conc.	17.9	116.1	122.4	119.6	121.2	127.1	137.8	138.5	143.1	137.2	135.4	-1.3
0405 Butter	24.1	90.5	90.7	92.5	90.7	91.7	97.0	93.8	84.1	85.3	83.5	-2.1
0407 Eggs	16.0	118.2	132.5	140.1	143.0	142.9	142.2	140.0	140.3	145.6	140.9	-3.2
<b>II. VEGETABLE PRODUCTS</b>												
<b>07 Vegetables</b>	<b>100.0</b>	<b>85.9</b>	<b>94.4</b>	<b>86.8</b>	<b>87.1</b>	<b>88.0</b>	<b>105.7</b>	<b>107.9</b>	<b>94.2</b>	<b>94.3</b>	<b>97.4</b>	<b>3.3</b>
0701 Potatoes	56.5	89.5	104.0	104.6	101.5	102.7	110.9	111.4	104.7	99.7	101.6	1.9
0703 Onions	43.5	81.2	81.9	63.6	68.3	68.8	99.1	103.4	80.4	87.3	91.9	5.3
<b>10 Cereals</b>	<b>100.0</b>	<b>75.0</b>	<b>72.1</b>	<b>71.2</b>	<b>72.6</b>	<b>71.2</b>	<b>70.4</b>	<b>68.6</b>	<b>67.6</b>	<b>70.6</b>	<b>72.3</b>	<b>2.5</b>
1006 Rice	100.0	75.0	72.1	71.2	72.6	71.2	70.4	68.6	67.6	70.6	72.3	2.5
<b>11 Milled prods.</b>	<b>100.0</b>	<b>78.9</b>	<b>79.7</b>	<b>80.2</b>	<b>74.6</b>	<b>75.7</b>	<b>79.8</b>	<b>79.3</b>	<b>75.2</b>	<b>78.6</b>	<b>78.3</b>	<b>-0.4</b>
1101 Wheat	100.0	78.9	79.7	80.2	74.6	75.7	79.8	79.3	75.2	78.6	78.3	-0.4
<b>III. FATS &amp; OILS</b>												
<b>15 Fats &amp; oils</b>	<b>100.0</b>	<b>90.1</b>	<b>89.6</b>	<b>89.1</b>	<b>91.0</b>	<b>92.7</b>	<b>92.1</b>	<b>92.0</b>	<b>91.8</b>	<b>90.9</b>	<b>88.8</b>	<b>-2.3</b>
1507 Soya-bean	27.7	100.0	100.0	100.0	100.0	100.0	100.0	100.0	100.0	100.0	100.0	0.0
1516 Hydrogenated	36.7	80.0	79.5	76.2	81.6	80.4	82.3	80.1	79.3	81.4	78.1	-4.1
1517 Margarine	35.7	92.7	91.9	93.8	93.5	99.6	96.1	98.1	98.3	93.7	91.2	-2.7
<b>IV. FOOD, BEVERAGES &amp; TOBACCO</b>												
<b>16 Meat, fish</b>	<b>100.0</b>	<b>96.3</b>	<b>88.6</b>	<b>87.5</b>	<b>89.2</b>	<b>88.7</b>	<b>91.1</b>	<b>90.0</b>	<b>87.5</b>	<b>93.2</b>	<b>82.9</b>	<b>-11.1</b>
1602 Corned Beef	31.0	113.1	105.8	109.8	102.2	104.1	105.3	105.3	100.2	102.1	102.8	0.7
1604 Canned fish	69.0	88.7	80.9	77.4	83.3	81.9	84.7	83.2	81.8	89.2	73.9	-17.1
<b>17 Sugars</b>	<b>100.0</b>	<b>164.4</b>	<b>166.8</b>	<b>168.0</b>	<b>171.0</b>	<b>162.8</b>	<b>159.1</b>	<b>159.8</b>	<b>160.2</b>	<b>163.9</b>	<b>157.4</b>	<b>-3.9</b>
1701 Cane, beet	100.0	164.4	166.8	168.0	171.0	162.8	159.1	159.8	160.2	163.9	157.4	-3.9
<b>19 Cereals</b>	<b>100.0</b>	<b>100.4</b>	<b>98.0</b>	<b>96.0</b>	<b>95.6</b>	<b>95.5</b>	<b>92.0</b>	<b>91.7</b>	<b>94.6</b>	<b>101.3</b>	<b>98.9</b>	<b>-2.4</b>
1902 Pasta	56.0	107.8	103.4	100.7	100.7	100.1	95.6	95.5	100.7	108.9	105.5	-3.1
1905 Bread	44.0	90.9	91.2	90.0	89.2	89.7	87.4	86.9	86.7	91.5	90.5	-1.2
<b>V. MINERAL PRODUCTS</b>												
<b>27 Mineral fuels</b>	<b>100.0</b>	<b>170.0</b>	<b>160.5</b>	<b>166.8</b>	<b>152.9</b>	<b>168.0</b>	<b>165.1</b>	<b>163.9</b>	<b>163.7</b>	<b>156.2</b>	<b>113.8</b>	<b>-27.2</b>
2710 Petroleum oils	100.0	170.0	160.5	166.8	152.9	168.0	165.1	163.9	163.7	156.2	113.8	-27.2

Source: Samoa Bureau Statistics (Economics Division)

(P) Provisional figures

(R) Revise figures